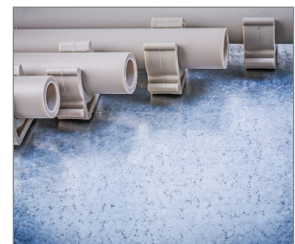


R-RAWL-SC40II Gas powered steel and concrete nailer

Gas powered nailer for steel and concrete



Certificate
CE

Product information

Features and benefits

- Pin range from 15mm to 38mm provides wide range of application
- Simplified depth adjustment design provides the end user with easy but accurate depth of drive control
- Removable magnetic nose tip for attaching metal clips and ceiling hangers. User can safely and comfortably perform in all overhead applications
- Compact and ergonomic design allows the operator to achieve great accessibility and freedom of operation
- Rear loading lightweight plastic magazine with a capacity of 30 pins provides durability and accessibility
- Sequential firing mode for operators safety and fixing precision

Applications

- Cable conduits and wires installation
- Applicable for fixing steel and aluminium profiles in drywall structures
- Installation of all types of M&E clips and clamps

Corresponding products

- R-KNC plastic collated concrete pins with fuel cells
- R-KSC plastic collated pins for steel with fuel cells
- R-RAWL-GP5 Fuel Cell for use with R-RAWL-SC40II
- R-SC40-MW-25 metal washer

Base materials

- Concrete C20/25-C50/60
- Concrete Slab
- Unreinforced concrete
- Concrete
- Structural Steel

Set includes

- R-RAWL-SC40II Gas powered nailer
- 1 battery
- AC power supply cable
- Charger base
- Operating and Safety manual



Product commercial data

Index	Fastener length range	Substrate	Shots per charge	Fastener type	Dimensions	WEIGHT	Fuel cell type	Magazine capacity	Battery charge	Noise level	Box weight	Outer weight	EAN
	[mm]				[mm]	[kg]		[nail]	[h]	[dB]	kg	kg	
R-RAWL-SC40II	15 - 38	Concrete C20/25 - C50/60	8000	Round head pin	395x355x120	3.5	GP5	30	0.5	92	9.00	18.00	5906675438092